

IPA Systems

Classified Layout System



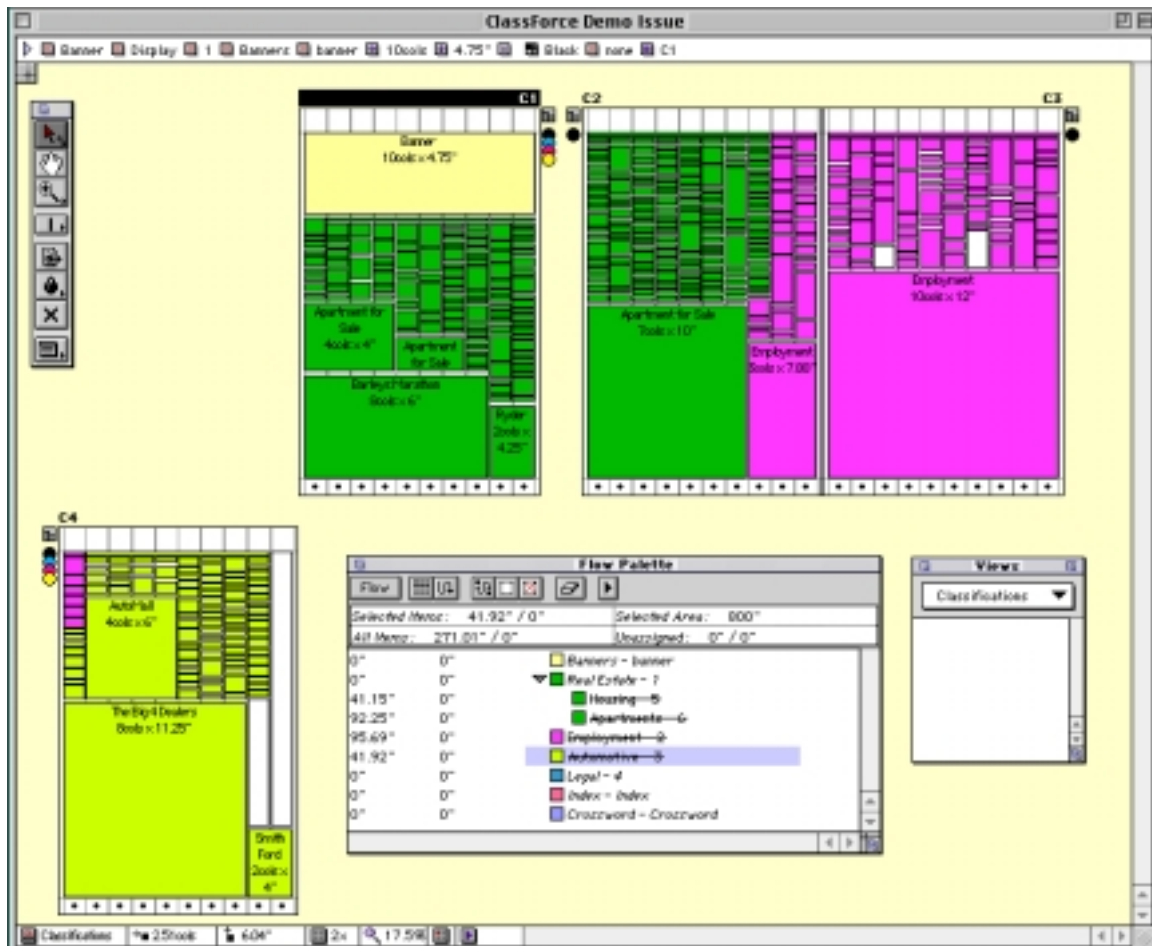
ClassForce

**CLASSIFIED LAYOUT
SYSTEM**

ClassForce



SYSTEMS LIMITED



ClassForce® is the perfect classified pagination tool for newspapers that do not require the level of customized automation provided by MEI's Page Director® CLS® and its rules-based placement engine. ClassForce® provides semi-automatic flow of linage and display adverts coupled with classification-based controls for header and filler positioning. A Macintosh application, ClassForce® reads advertising text and image files from a front-end booking system, including all systems currently integrated with CLS®. ClassForce® then builds a runsheet of the classified items, and provides point-and-shoot pagination tools for fast and easy creation of complete classified pages.

In a typical ClassForce® workflow, display ads are flowed to pages classification by classification, adjusted if necessary, and then the linage is flowed around them. The pages are quickly justified based on user-defined parameters for spacing and filler placement, and automatically line-ruled according to user-defined styles. Using the included XTension, finished sections can then be opened into QuarkXPress™

for any additional pagination activity and PostScript output, with all links to display advert files and lineage text or graphic files in place. In the future a Plug-in will also be available to open ClassForce® pages into Adobe® InDesign™.

ClassForce® offers multi-directional flow, automatic header placement, automatic vertical justification of elements, and auto-selection and insertion of fillers. Display advert placement offers control over gravity, placement priority, and header requirements. All lineage placement functions can be controlled on a classification-by-classification basis: widow and orphan control, user-definable flow sequence override to achieve best fit, header placement rules, automatic line-ruling, and vertical justification. Header placement is also customisable by advert type and a classification-by-classification basis, including how headers are positioned and which types are used in specific circumstances. Multiple-column headers can be defined that will automatically substitute for single-column headers when a classification covers more than one column.

ClassForce® can vertically justify the classified columns across a single page or across multiple pages. Based on user preference, the program can automatically create a filler or place an existing filler from the runsheet, and also supports top-of-column, bottom-of-column, or random filler placement.

ClassForce® offers multiple import options, and like CLS it can utilize files from just about any front-end classified order-entry system. Lineage files can be saved as ASCII text with Xtags or as EPS files, and then simply read into the ClassForce® document. ClassForce® can interpret all the basic information needed to flow the items to pages. ClassForce® also provides a specialized “gather” capability for finding and measuring ads or filler items automatically and compiling them into a runsheet for placement in the issue.

Brief System Specification

- ✓ Basic Requirements (Workstation):
- ✓ Apple Macintosh with G4 processor
- ✓ Minimum 128Mb RAM
- ✓ 17” - 21” colour monitor (1024x768 capable)
- ✓ QuarkXPress V.4 or later

System functionality

- ✓ Speed up pagination with semi-automatic placement of displays and lineage adverts
- ✓ Use interactive drawing tools to define and pinpoint areas for flowing and squaring
- ✓ Control header and filler placement on a classification-by-classification basis
- ✓ Automatically justify areas and pages, and dynamically place fillers
- ✓ Position item and column line rules across multiple pages in just seconds
- ✓ Define virtually all layout parameters on a classification-by-classification basis
- ✓ View all pages at once to maintain the overview during pagination
- ✓ Use the bundled CLS® XTension to open finished pages in QuarkXPress™.
- ✓ Use the Flow Palette to point and shoot or drag and drop items to pages quickly
- ✓ Arrange items easily with the single-click tools of the Align Palette

- ✓ Monitor the total placed and unplaced inches of each classification
- ✓ View classification and item types by colour
- ✓ Print issue layouts and runsheets for review
- ✓ Break up ClassForce sections into smaller page increments for XPress.



U.K. OFFICES:

IPA Systems Limited
9 Perrywood Business Park
Salfords, Redhill
Surrey RH1 5DZ

Telephone: +44 1737 768644
Fax: +44 1737 771827

IPA Systems Limited
Seaton House
3 Aberford Road
Garforth
Leeds LS25 1PZ

Telephone: +44 1132 875337
Fax: +44 1132 875338

IPA Systems Limited
The Priory
37 London Road
Cheltenham
Gloucestershire GL52 6HA

Telephone: +44 1242 573344
Fax: +44 1242 519364

www.ipasystems.co.uk

E-mail: sales@ipasystems.co.uk

PrePRESS



Distributor Stamp



SYSTEMS LIMITED

IPA Systems Limited, 9 Perrywood Business Park, Salfords, Redhill, Surrey RH1 5DZ England
Tel +44 1737 768644 Fax +44 1737 771827 www.ipasystems.co.uk E-mail: sales@ipasystems.co.uk